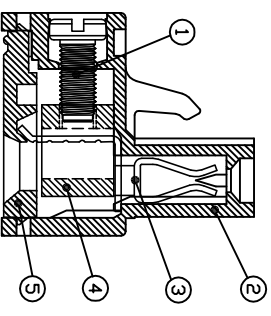
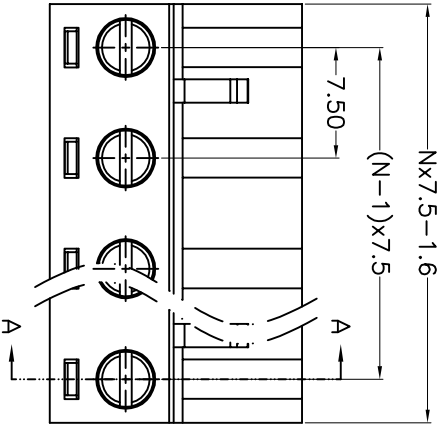
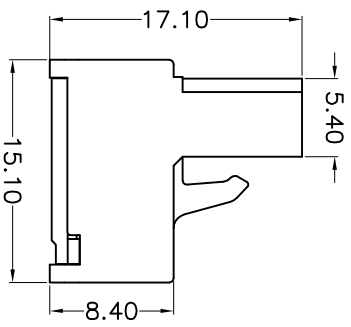
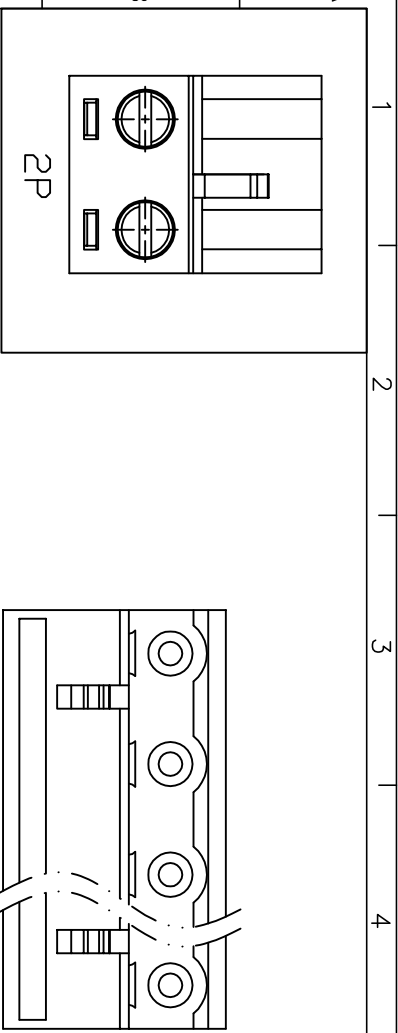


REV.	DESCRIPTION	DATE	DRAFTER	APPROVER
V1.0	DWG.REL	2024.9.22	ZHANG	JIN



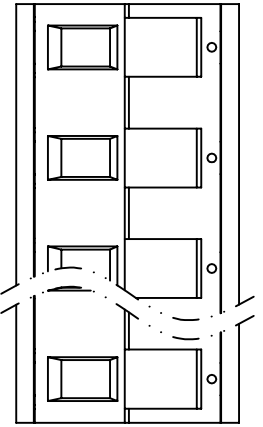
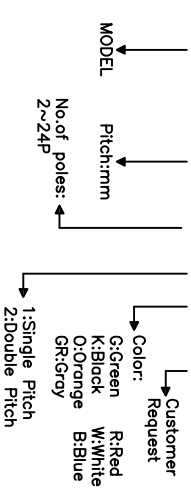
- Material
 - ØScrew : M3.0 steel, Zinc plated, "-"-slot type
 - ØHousing : PA66, UL94V-0
 - ØContact : Copper alloy, Tin plated
 - ØClamp : Copper alloy, Ni plated
 - ØCover : PA66, UL94V-0

- Electrical
 - UL IEC
 - Rated voltage : 300V 400V
 - Rated current : 15A 20A
 - Contact resistance : 20mΩ(Max)
 - Insulation resistance : 500MΩ/DC500V
 - Withstanding Voltage : AC2500V/1min
 - Wire range : 28-12AWG 2.5mm²

- Mechanical
 - Operating temperature: -40°C ~ +105°C
 - Soldering temperature: 250°C ±5/5sec
 - Torque: 0.5N.m (4.43Lb.in)
 - Strip length: 7mm

• Conform to REACH and RoHS

HOW TO ORDER
KF2EDG-X-7.5-XXP-1 X-XXXXX



Pitch range	Nominal dimension range	PROJECTION	UNIT	TITLE
>0	>10	0.1/10	mm	KF2EDG-X-7.5-XXP-1X
~6	~10			
~10	~24			
±0.15	±0.20	±0.30	±0.30	±2°
		±0.50	±0.70	±1.00
			±1.00	±1.30

DRAWING TYPE	CUSTOMER DRAWING	DRAWING NO.	SCALE	SHEET	1 OF 1
SCALE	1:1	W10000072	SHEET	1	OF 1

DF 慈溪市凯峰电子有限公司
CIXI KAIFENG ELECTRONICS CO.,LTD