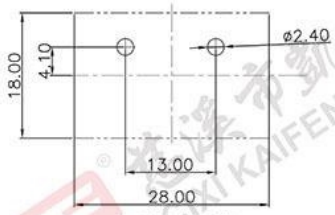
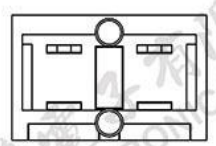
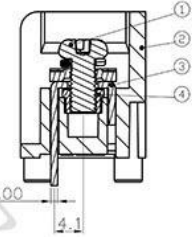
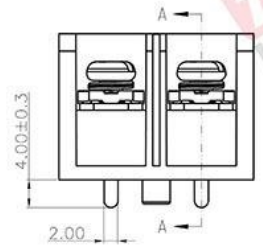
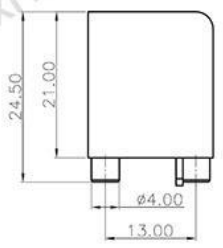
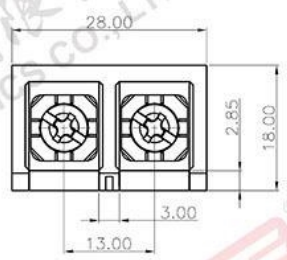
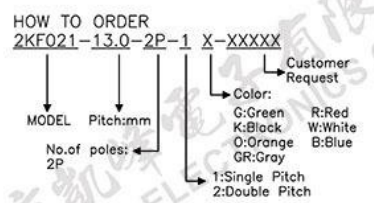


REV.	DESCRIPTION	DATE	DRAFTER	APPROVER
V1.0	DWG.REL	2023.8.10	ZZM	JIN



- Material
  - ØScrew : M4 Steel, Zinc plated
  - ØHousing : PBT,UL94V-0
  - ØTerminal : Copper alloy, Tin plated
  - ØNut: Steel, Zinc plated
- Electrical
  - Rated voltage : 600V
  - Rated current : 30A
  - Insulation resistance: 500MΩ/DC500V
  - Withstanding Voltage : AC3000V/1min
- Mechanical
  - Operating temperature: -30℃~+120℃
  - Torque: 1.2N.m(10.53Lb.in)
  - Wire range: 16-10AWG ;1.5-4mm<sup>2</sup>
- Conform to REACH and RoHS



Pitch range	Nominal dimension range	PROJECTION	UNIT	TITLE
>0 ~6	>10 ~24	0.1/10	mm	2KF021-13.0-2P-1K
±0.15 ±0.20	±0.30 ±0.30	±2°	SHEET SIZE	A4 SERIES 2KF021
DRAWING TYPE		CUSTOMER DRAWING		
SCALE		1:1 SHEET 1 OF 1		
DRAWING NO.		W12006292		

**DF** 慈溪市凯峰电子有限公司  
 CIXI KAIFENG ELECTRONICS CO.,LTD