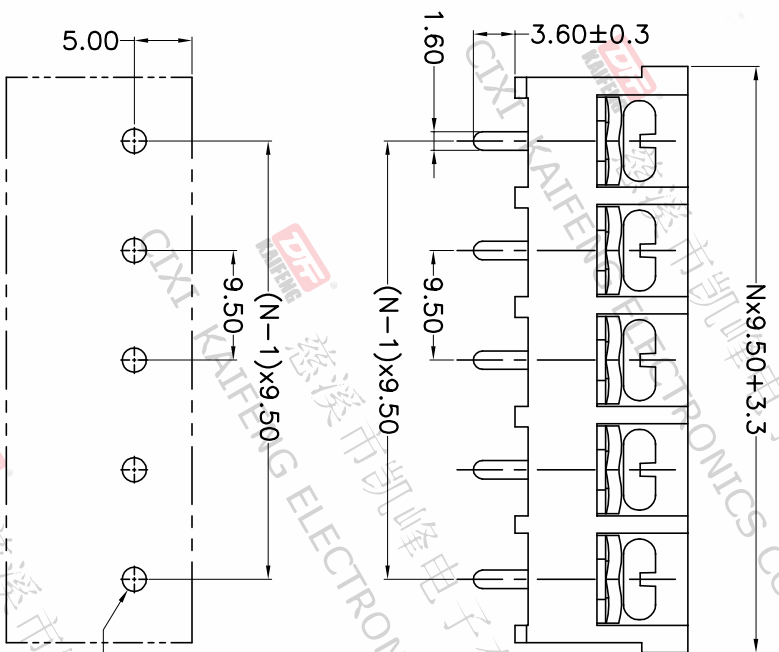
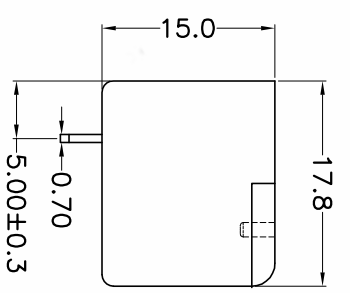
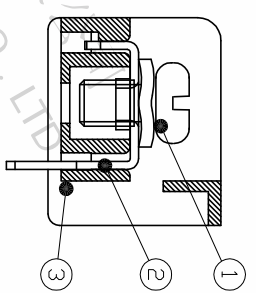
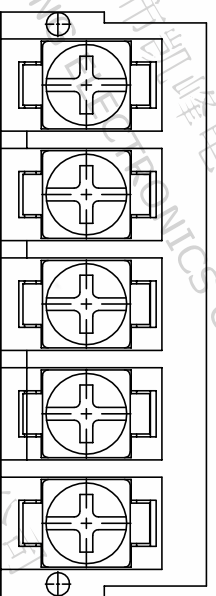


REV.	DESCRIPTION	DATE	DRAFTER	APPROVER
A1	DWG.REL	2020/11/2	ZHANG	JIN



P.C.B.LAYOUT

Pitch range	Nominal dimension range	PROJECTION	UNIT
>0	>0	0.1/10	mm
>6	>30		
>10	>60		
~	~		
6	30		
10	60		
24	100		
	150		
	>150		
±0.15	±0.30	±2°	
±0.20	±0.30		
±0.30	±0.50		
±0.70	±1.00		
±1.30	±1.30		

DRAWING TYPE	CUSTOMER DRAWING
SCALE	1:1
SHEET	1 OF 1
DRAWING NO.	W12001432

- Material  
 ØScrews : M4.0 steel, Ni plated  
 ØHousing : PA66,UL94V-0  
 ØTerminal: Brass, Tin plated
- Electrical  
 UL IEC  
 Rated voltage : 300V 750V  
 Rated current : 25A 32A  
 Contact resistance : 20mΩ(Max)  
 Insulation resistance: 500MΩ/DC500V  
 Withstanding Voltage : AC2000V/1min  
 Wire range: 22-12AWG 4.0mm<sup>2</sup>
- Mechanical  
 Operating temperature: -40°C ~ +105°C  
 Soldering temperature: 250°C ±5/5sec  
 Torque: 1.2N.m (10.53lb.in)
- RoHS compliance

HOW TO ORDER  
 HB-951-9.5-XXP-1 X-XXXXX

MODEL Pitch:mm  
 No.of poles:  
 2~24P

Customer Request  
 Color:  
 G:Green R:Red  
 K:Black W:White  
 O:Orange B:Blue  
 GR:Gray

1:Single Pitch  
 2:Double Pitch

TITLE	PROJECTION	UNIT	SHEET SIZE	SERIES
HB-951-9.5-XXP-1X-PA	0.1/10	mm	A4	HB-951

**DFE** 慈溪市凯峰电子有限公司  
 CIXI KAIFENG ELECTRONICS CO.,LTD